

EPSON 4800 PRINTER WORKSHOP



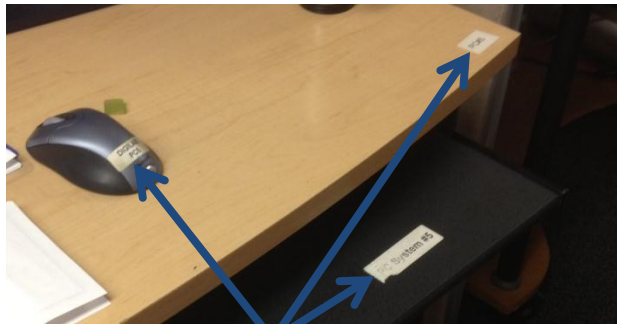
By

Tim Talbert

When and Why should I use the 4800

- Large Prints
 - 16" by 49'
- Thick Media
 - Can print without bending the media
 - Up to 1.5mm, .059"
- Cost
 - \$0.12 per inch(two 8x10 prints side by side = \$1.20)
 - Costco two 8"x10" \$1.49 ea = \$2.98

Connect the computer and the printer via USB

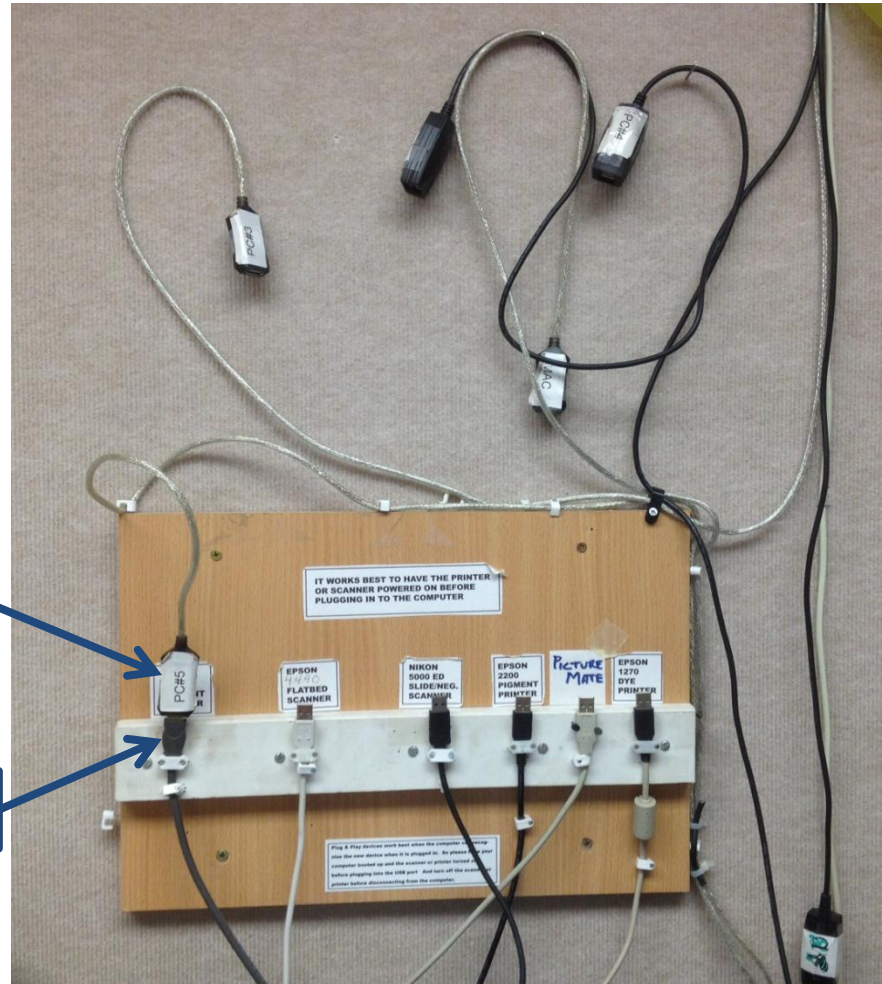


PC #5

Connect USB cable of the computer you are using to the printer you want to use

PC #5 Cable

Epson 4800 Printer



Go to File/Print

This opens the print dialog box

EPSON Stylus Pro 4800

Print

Printer: EPSON Stylus Pro 4800

Copies: 1

Print Settings...

Position

Center Image

Top: 0.388

Left: 3.388

Scaled Print Size

Scale to Fit Media

Scale: 100%

Height: 6

Width: 9

Print Resolution: 300 PPI

Bounding Box

Units: inches

Match Print Colors

Gamut Warning

Show Paper White

Color Manage...

Document
(Profile: Adobe RGB (1998))

Proof
(Profile: N/A)

Color Handling:

Photoshop Manages Colors

Remember to disable the printer's color management in the print settings dialog box.

Printer Profile:

Pro4800 PLPP260

Rendering Intent:

Relative Colorimetric

Black Point Compensation

Proof Setup:

Working CMYK

Simulate Paper Color

Simulate Black Ink

Cancel Done Print

Photoshop Manages Colors

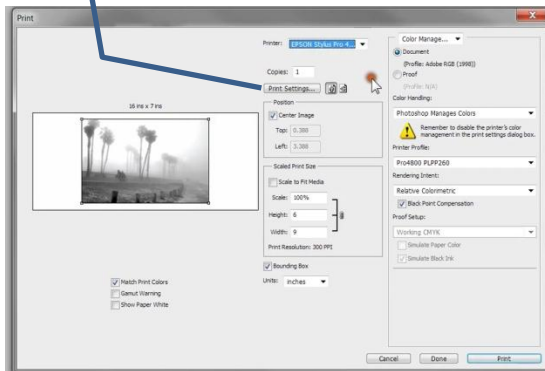
Pro 4800 PLPP 260

Relative Chromatic

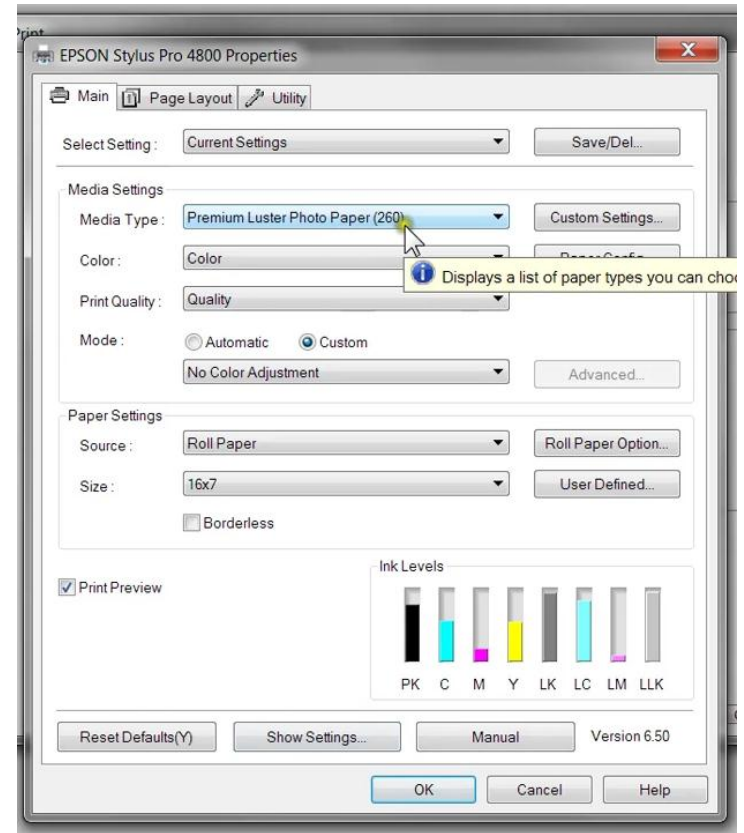
Check Mark This Box

Print Settings

Click on the Print Settings
To open the
4800 Properties dialog box.



4800 Properties



Settings the properties

Media Type

Premium Luster Photo Paper (260)

Color

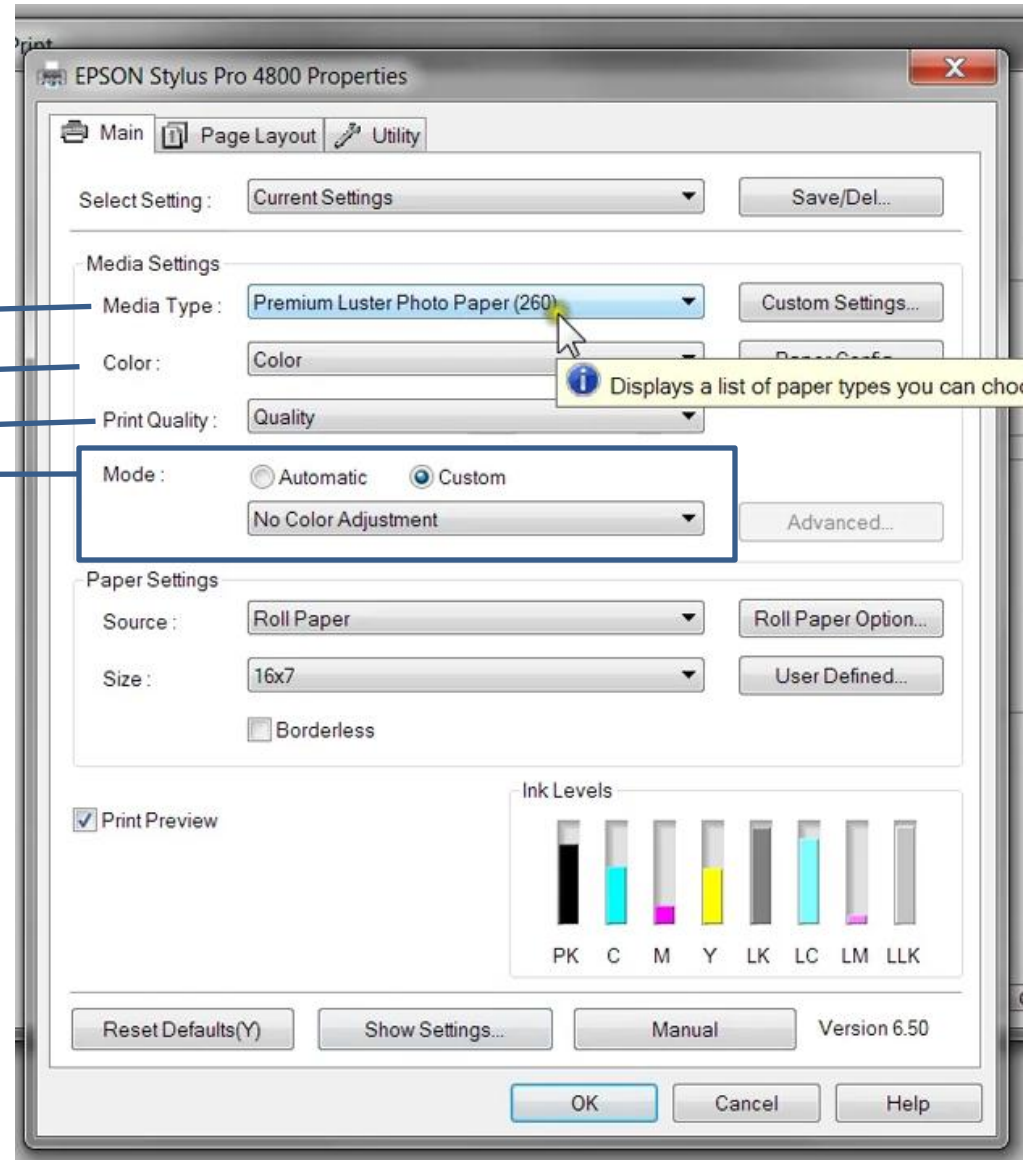
You can leave this on **Color** even if you are printing a B/W image.

Print Quality

Always set to Quality

Mode

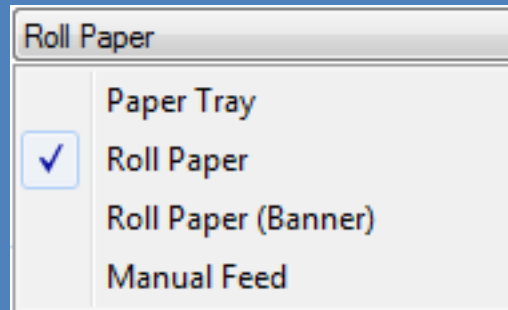
Always set to
Custom
No Color Adjustment



4800 Properties dialog box

Source

Select where your paper is coming from.

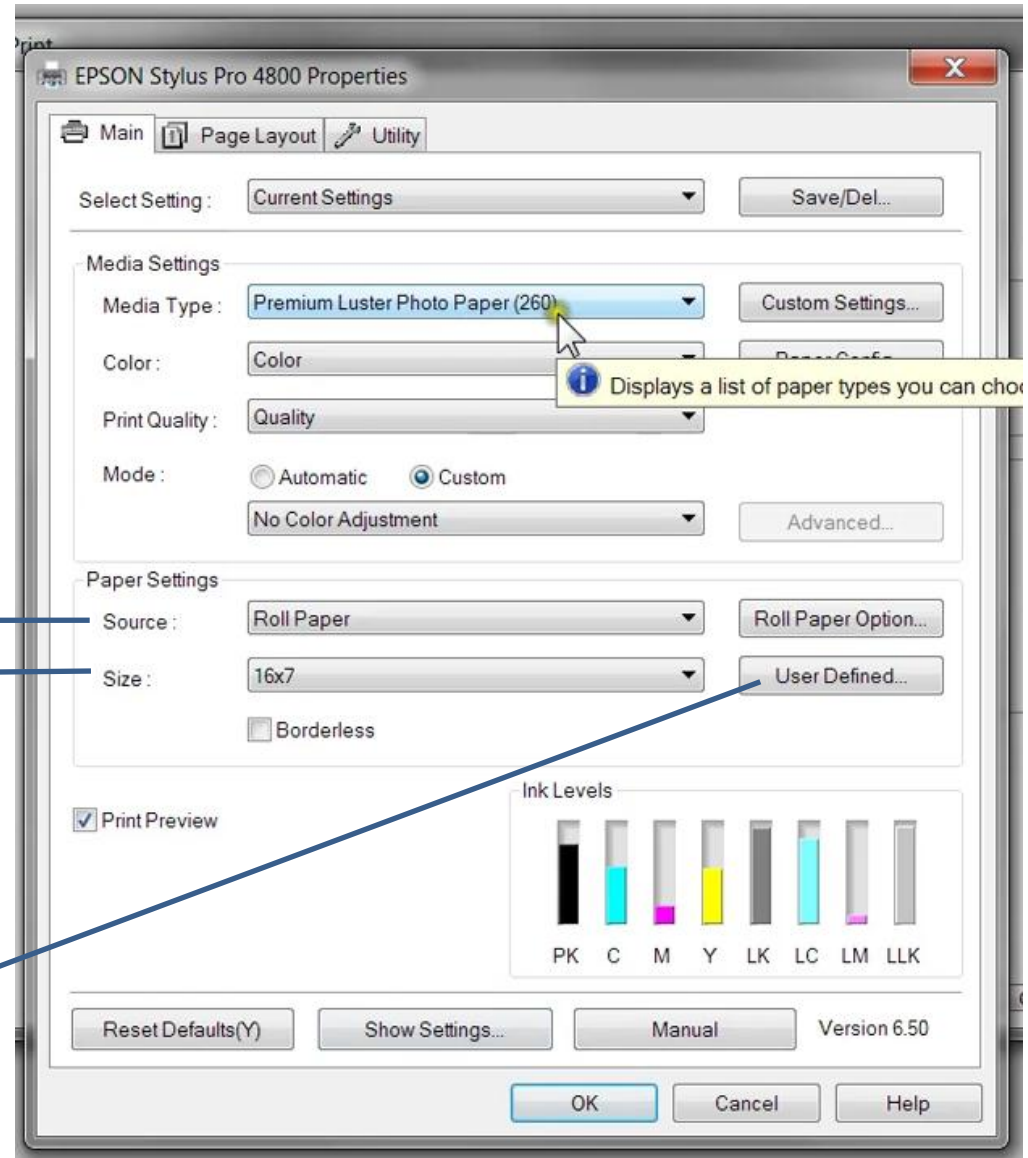


Size

Select the paper size you are using. In this case I am using a User Defined size of 16x7 in.

User Defined...

Click on this button to create a custom size



Creating A User Defined Paper Size

The screenshot shows a dialog box titled "User Defined Paper Size". It contains the following fields and controls:

- Base Paper Size :** A dropdown menu set to "User Defined".
- Paper Size :** A list box containing "User Defined" and "16x7", with "16x7" selected.
- Paper Size Name :** A text input field containing "16x7".
- Fix Aspect Ratio :** A dropdown menu set to "Not Specify".
- Base :** Radio buttons for "Landscape" (selected) and "Portrait".
- Paper Width :** A spin box set to "16.00" with a range of "(3.50 - 17.01)".
- Paper Height :** A spin box set to "7.00" with a range of "(5.00 - 590.55)".
- Unit :** Radio buttons for "mm" and "inch" (selected).
- Buttons:** "Save", "Delete", "OK", "Cancel", and "Help".

Callout lines connect the following text boxes to the corresponding fields in the dialog:

- "Paper Size Name" points to the "Paper Size Name" text field.
- "Paper Width" points to the "Paper Width" spin box.
- "Paper Height" points to the "Paper Height" spin box.
- "Unit Of Measure" points to the "inch" radio button.
- "Save" points to the "Save" button.

Paper Size Name

Type in a name for your paper size.

Paper Width

Type in the width of the paper.

Paper Height

Type in the height of the paper.

Unit Of Measure

Select the unit of measure as "inch"

Save

Once the above info is entered Click Save

Before You Leave

- Unload roll paper
- Disconnect USB connection
- Do Not Turn The Printer OFF
- Pay for the supplies you used
 - Fill out the form and drop it in the box with the \$

Happy
Printing

